



Next up: September 7 Fall Heritage Festival
Kentucky's Outdoor Classroom

Homeplace on Green River

September 7th Homeplace Festival Day of Family Fun, Learning

Homeplace on Green River is presenting its twelfth annual fall festival September 7. With some of the previous arts and crafts vendors, exhibitors, rides and food vendors joined by new activities, this year's festival should be another successful family day at Homeplace on Green River.

There will be day-long demonstrations and events including Native American Culture (Darlene Campbell), butter making for kids, pottery making (hands-on for kids) by David Waltz, a hay maze and barrel train for the little ones and hay rides for all. The folks from Somerset's Liberty Nature Center are bringing their amazing birds, including hawks, falcons, owls, vultures and other raptors.



The list goes on and is still building. The day will include Jennifer Beams and her Peaceful Place Candles; Rebecca Cavens, Usborne Books and More; D&D Designs, water-marbled silk scarves; Diana Roution, crocheted animal and decorate crafts; Alice Smith, Alisa's Attic; Bonnie Stanbery, crocheted items and American Indian jewelry. These are only a few of the vendors who will be selling their arts and crafts. All the items sold are from Kentucky vendors.

Kay Gschwind will return with her Suffolk Punch draft horses. She will also be educating and informing festival goers about sustainable forestry and logging practices. The Alpacas from Barnett's Creek Farm will be there, and, as always, food vendors will be selling pulled pork, tenderloin, catfish, and a variety of other good things to eat.

There is also a tradition of day-long live music in the Homeplace show barn, and it continues this year including Maggie Coleman, Stephany Archey and friends singing familiar show tunes; The Foster Children and Renetta and Friends, among others.

The festival is a family event, and special activities for the young and those who wish they were young will include hay rides, a barrel train, and a large hay maze and pork tenderloin sandwiches.

The only charge for the festival is \$10 per vehicle parking fee and anything spent for food and purchases from the artists and crafters. All other activities are free. The festival will be on-going from 9:00 until 5:00 EDT.

We need a little help. Fall Fest volunteers

Free chance at fame—Only the qualified need apply. .

This is your big chance for fame. And not just 15 minutes, but an entire three hours in the limelight! And it's our gift to you—no charge. If you can help in one of the areas listed below we will appreciate it. Please contact Mary Knight at madisonmary38@gmail.com or 270-250-5226. And you get free parking.

- Children's hay maze in the tobacco barn. BYOGPS (Bring you own GPS-Homeplace will not be responsible if you get lost in the maze)
- Barrel train and hay wagon drivers for the train, and people to help with loading and unloading
- Information booth helping with giving directions, selling Homeplace T-shirts
- The horse barn, and with pony rides BYOS (Bring your own shovel)
- At the gate—pass out event maps and collect the parking fee. No bond required—we trust you.
- Parking assistance BYOFBC (Bring you own flashlight and billy-club)
- Assisting those doing demonstrations and the art and crafts vendors to be sure they have water and to provide a break for them when they go to eat or just go see what going on elsewhere at the festival.



"The guard is asleep. I'll spring the gate, and take out the thinker and the other guy. You take out the two ladies."

- Trash and recycling barrels management (the only management job currently open for the festival)
- Restroom patrol-making sure there are towels, soap and toilet paper and that no one is cutting in line
- General help in the metal building. Help with the hot dog stand, keeping the tables and chairs wiped off
- Help the caterers who will be feeding the other volunteers. BYOB (Bring your own bib)

Sign up for a three-hour commitment. The rest of the day is yours to see what else is going on at the festival.

Homeplace is located between Campbellsville and Columbia about one-half mile from the Green River/Highway 55 bridge at 5807 New Columbia Road (Highway 55), Campbellsville. Additional information about Homeplace on Green River is available at www.homeplacefarmky.org or on Facebook at Homeplace on Green River Kentucky.

Homeplace is available for personal uses such at weddings, company or family gatherings

Rates for use of the facilities are:

- For use of all structures except the house: Corporate: \$2,500 which includes a \$500 refundable deposit
- For weddings: \$2,000 which includes a \$500 refundable deposit
- For non-profits: \$1,500 which includes \$500 deposit
- For use of one structure at the farm: \$750 includes a \$250 refundable deposit.

Refundable deposit is available only if the grounds are cleaned up and there is no property damage.

To reserve the facilities or if you have questions, contact Sarge Pollack at 270 789 8409 or sarge@jessieinsurance.com

American Chestnut preservation continues

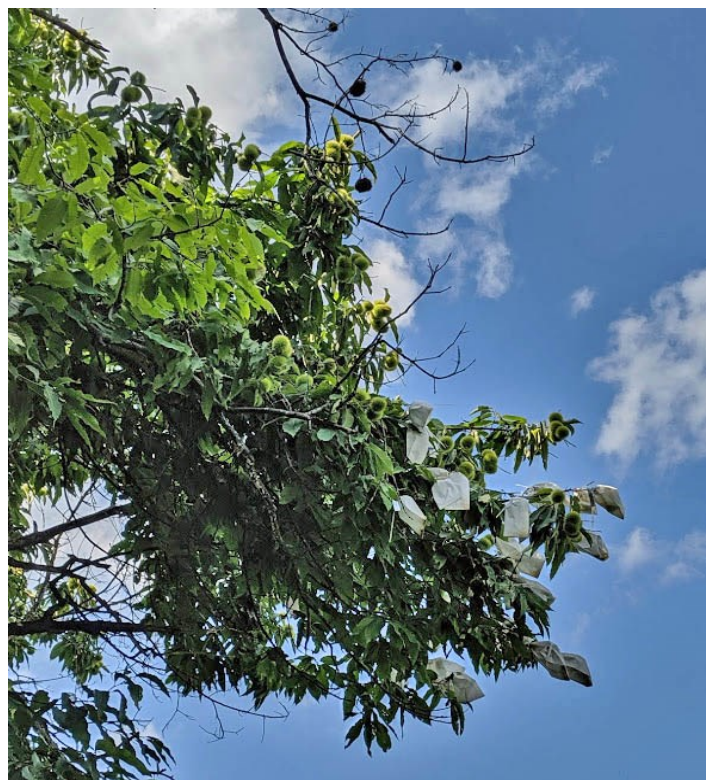
As many folks know, Homeplace in conjunction with the Kentucky Chapter of the American Chestnut Foundation and other stakeholders is establishing an American Chestnut mother tree orchard at the farm. This orchard will be a repository for locating local American Chestnut seedlings to secure our local American Chestnut genetics for research and for seed production.

We are blessed to have the largest American Chestnut in Kentucky located just outside the city limits of Columbia. This tree is a survivor of the blight which killed most every American Chestnut and has a unique resistance to the blight. That resistance is being researched and samples of its DNA are held in cold storage for research purpose

Several of us are currently systematically searching the woodlots, fence rows, and wooded drainages around this tree for other root sprouts or survivors. These pictures of the iconic old chestnut were taken by Dr. Jennifer Koplow, a professor at Eastern Kentucky University, during one of these American Chestnut safaris.



This old American Chestnut, located in Adair County, is 42 inches in diameter 5 feet above the ground. This view is looking up the trunk and evidence of a lightning strike from years ago can be clearly seen. Also, notice the dead limbs and twigs which have been killed by the blight.



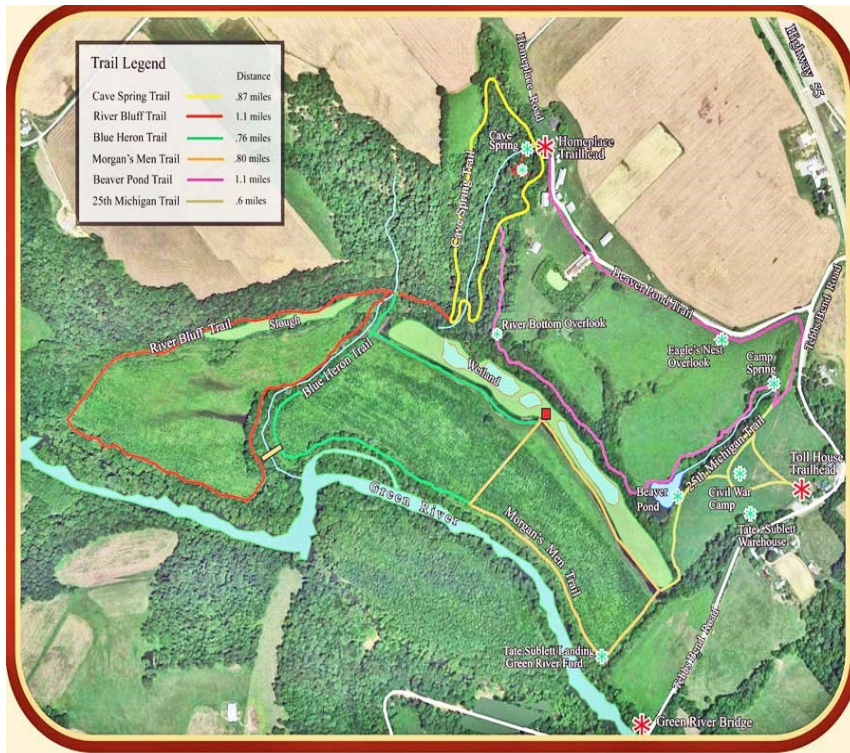
The burrs (seed pods) seen here unfortunately have no viable seed in them. American Chestnut will not self-pollinate and since there are no more trees in close proximity, the burrs are empty.

Many of the tree's blooms were pollinated by hand with pollen from Kentucky, Tennessee and Virginia and will produce viable seed inside the bags seen on the tree. These seeds will be germinated at Bernheim Forest this winter and the seedlings will be planted at Homeplace next Spring. We will be looking for volunteers to help.

The story of the American Chestnut and the role it has played in the history of the eastern USA is an interesting tale. For more information go to the American Chestnut Foundation at www.acf.org or for more specific Kentucky information go to www.acf.org/ky

The work goes on

We are working hard to complete two important areas at Homeplace in time for the September 7 Festival. Weather this spring and summer has stalled the completion of the new exit road coming from the main entrance road, passing behind the house and other buildings before exiting on the present road on the side of the red tobacco barn. We do expect that road to be completed before the festival. We are working hard to clear and improve the walking trails in the woods.



The Tebbs Bend Nature and Recreation Trail is being refurbished with some relocation in troublesome, wet areas and will be completed prior to the festival.

The trail has more than five miles laid out in a series of loops of varying length and steepness, which provides an opportunity to choose varying degrees of difficulty.

Also, construction will begin soon on the nearly three mile Homeplace Agrarian Trail. This will be located primarily in open more level land and will be a completely different walking or running experience. It will be connected to the current Tebbs Bend Trail, providing eight miles of a variety of trails to serve your needs and your enjoyment.

The trails include a variety of environments including woodlands, open fields, marshlands, and riparian areas.

There are more that 5 miles of trails with a trail head at Homeplace just across from the two silver grain cribs between the house and the horse barn and on Tebbs Bend Road beside the historic toll house. Large signs like the one above are located at each trail head. They are open all year from one hour after sunrise until one hour before sunset. They are of varying difficulty. Trails are mostly on the Tebbs Bend/Green River Nature Area and are jointly maintained by Homeplace and Taylor County. The trails are maintained, but use them at your own risk.

Fall/Winter schedule brings plans for new activities

The board has scheduled and/or is working on scheduling some new and exciting activities for this fall and winter. Planning is well under way for trail hike. Both of these activities will need volunteer help.

For December we are planning a weea kiddie hay maze and a woods haunted trail hike in October. Several of our shorter trials are ideal for a Halloween k of Christmas-oriented events including another attempt to schedule a performance of selections from Handel's Messiah. The Lindsey Wilson Chorus accompanied by member of the Louisville Orchestra were scheduled to perform a "Messiah sing along" last winter, but the weather turned dangerously cold and the performance was moved to a church in Columbia. We will try again this year, and hope to also have local church music groups and individuals perform. Our plans call for a live nativity scene sponsored by one or more of our local churches. We are certainly open to your suggestions on what you would like to see and hear.